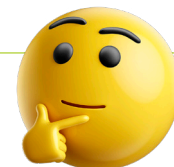


# FREQUENTLY ASKED QUESTIONS



Check here for questions you may have about getting started on Toujeo or Toujeo Max



## 1 How do I know if Toujeo® Max SoloStar® (insulin glargine) injection 300 Units/mL is right for me?

Toujeo Max is the most concentrated long-acting insulin available. It can hold 900 units of insulin in a same-size pen compared to a standard long-acting insulin pen. Because it's concentrated, you inject less liquid each time. So you may use fewer pens over time. After you open a Toujeo SoloStar or Toujeo Max SoloStar pen, it can be stored at room temperature up to 86°F (30°C), and it uses the smallest needles available for insulin pens. Your doctor will decide which pen is best for you.

[What is Toujeo Max?](#) ▶

## 2 Can Toujeo be taken with diabetes pills or other diabetes medications?

Yes, but your doctor will determine which medications are right for you. Talk with your doctor about the medications and supplements you take, especially those called thiazolidinediones (TZDs) because they can change how insulin works.

## 3 Will I need to change the dose or how often I take mealtime insulin while on Toujeo?

Ask your doctor about any adjustments that need to be made to any other medications, including mealtime insulin, while taking once-daily Toujeo.

[Learn more about starting on and staying on Toujeo](#) ▶

## What is Toujeo U-300 (insulin glargine) injection 300 Units/mL?

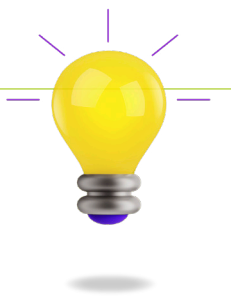
Prescription Toujeo is a long-acting man-made insulin used to control high blood sugar in adults and children who are 6 years of age and older with diabetes mellitus.

- Toujeo is not for the treatment of diabetic ketoacidosis
- It is not known if Toujeo is safe and effective in children under 6 years of age

## Important Safety Information for Toujeo U-300 (insulin glargine) injection

Do not use Toujeo if you have low blood sugar or if you are allergic to insulin or any of the ingredients in Toujeo.

Please see full Important Safety Information for Toujeo throughout. Please [click here](#) or visit <https://products.sanofi.us/toujeo/toujeo.pdf> for full Prescribing Information for Toujeo.



## FREQUENTLY ASKED QUESTIONS

4

### What if I've never used a Toujeo long-acting insulin pen before?

Toujeo pens have the most concentrated insulin of any pen, so you'll have less liquid to inject. Toujeo pens also use the smallest needles available for insulins, and 95% of patients said Toujeo SoloStar was easy to use.\* This video will show you step by step how to use your Toujeo pen.

[How to use Toujeo insulin](#) ▶

5

### Will my Toujeo dose stay the same once I start?

Your healthcare provider will recommend a starting dose of Toujeo and adjust it over time to the dose that best helps you reach your blood sugar level goals. Adjusting your dose is called titration and it's a normal part of the process. Talk to your doctor about it. Being involved in these decisions is an important part of managing your diabetes.

[Tips for Starting On, Staying On Toujeo](#) ▶

6

### Why should I take Toujeo at the same time each day?

You should take once-daily, long-acting Toujeo at the same time each day because it may help improve your blood sugar control around the clock. That's why it's important to set up a daily routine and to work with your doctor to choose a time that fits best with your schedule.

[Learn more about creating a routine](#) ▶

\*At the end of a 4-week study of 40 patients, 95% of first-time insulin users with type 2 diabetes rated the Toujeo SoloStar pen as easy to use.

All patients in the study were trained on how to use the pen by healthcare providers. It is important to ask your healthcare provider to show you how to use the pen before using it.

### Important Safety Information for Toujeo U-300 (insulin glargine) injection (cont'd)

**Do not share your pen(s) with other people, even if the needle has been changed.** You may give other people a serious infection or get a serious infection from them.

Before starting Toujeo, tell your doctor about all your medical conditions, including if you have liver or kidney problems, if you are pregnant or planning to become pregnant, or if you are breastfeeding or planning to breastfeed.

Please see full Important Safety Information for Toujeo throughout. Please [click here](#) or visit <https://products.sanofi.us/toujeo/toujeo.pdf> for full Prescribing Information for Toujeo.



## FREQUENTLY ASKED QUESTIONS

7

### What is “time in range”?

Time in range (TIR) is the amount of time you spend in the target blood glucose (blood sugar) range that’s often set by your doctor (between 70 and 130 mg/dL for most people). One way to monitor your TIR is with continuous glucose monitors (CGMs). They provide information about how much time a person spends in their target glucose range. TIR can help people with diabetes and their healthcare providers assess how well glucose levels are being managed, and make adjustments to treatment plans as needed.

[Find out more about CGMs](#) ▶

8

### What is the most common side effect of Toujeo?

For all insulins, including Toujeo, the most common side effect is when your blood sugar drops below the normal range. This is called hypoglycemia. Ask your doctor about the signs and symptoms of hypoglycemia, how to monitor your blood sugar, and what to do if you have a hypoglycemic event. You are encouraged to report side effects of prescription drugs to the FDA. Visit [www.fda.gov/medwatch](http://www.fda.gov/medwatch) or call 1-800-FDA-1088.

[Find out more about side effects](#) ▶

9

### What if I change my insurance?

If you change your insurance, let your doctor know to make sure you are still covered. You can find out by using the coverage finder at <https://www.toujeo.com/toujeo-medicare-part-d-coverage>. In the meantime, your pharmacy will provide you with a one-time, 30-day-supply transition refill of your prescription medication at your same co-pay. Be sure to call your health insurance plan directly to confirm coverage.

[Learn more about Coverage and Savings](#) ▶

## Important Safety Information for Toujeo U-300 (insulin glargine) injection (cont’d)

**Change (rotate) your injection sites within the area you chose with each dose** to reduce your risk of getting pitted or thickened skin (lipodystrophy) and skin with lumps (localized cutaneous amyloidosis) at the injection sites. **Do not** use the same spot for each injection or inject where the skin is pitted, thickened, lumpy, tender, bruised, scaly, hard, scarred, or damaged.

Please see full Important Safety Information for Toujeo throughout. Please [click here](#) or visit <https://products.sanofi.us/toujeo/toujeo.pdf> for full Prescribing Information for Toujeo.



## FREQUENTLY ASKED QUESTIONS

10

### What if there is not enough insulin left in my pen to inject?

If there is not enough insulin for your dose, don't worry. You can use another pen to finish your dose. Remember to always use a new needle, follow the *Instructions for Use* that comes with your pen, and perform a safety test. The pen will not let you dial more than the number of units left in it. For example, if you need 40 units and there are only 10 units left in the pen, you will need 30 units from the new pen.

11

### How often should I do a safety test?

A safety test should be performed before every injection. This can prevent issues with the dose selector on your pen.

12

### What if I turn the dose selector without the needle attached?

Turning the dose selector could potentially damage your pen and keep you from using the insulin in your pen.



### Important Safety Information for Toujeo U-300 (insulin glargine) injection (cont'd)

Heart failure can occur if you are taking insulin together with pills called TZDs (thiazolidinediones), even if you have never had heart failure or other heart problems. If you have heart failure, it may get worse while you take TZDs with Toujeo. Your treatment with TZDs and Toujeo may need to be changed or stopped by your doctor if you have new or worsening heart failure. Tell your doctor if you have any new or worsening symptoms including:

- Shortness of breath
- Sudden weight gain
- Swelling of your ankles or feet

Please see full Important Safety Information for Toujeo throughout. Please [click here](#) or visit <https://products.sanofi.us/toujeo/toujeo.pdf> for full Prescribing Information for Toujeo.

## Important Safety Information for Toujeo U-300 (insulin glargine) injection (cont'd)

Tell your doctor about all the medications you take, including OTC medicines, vitamins, and supplements, and herbal supplements.

Toujeo should be taken at the same time once a day. Test your blood sugar levels daily while using any insulin. Do not change your dose or type of insulin without talking to your doctor. Verify you have the correct insulin before each injection. **Do NOT use a syringe to remove Toujeo from your pen.** Your dose for Toujeo may be different from other insulins you have taken. Any change of insulin should be made cautiously and only under medical supervision.

**Do NOT dilute or mix Toujeo with any other insulin or solution.** It will not work as intended and you may lose blood sugar control, which could be serious. Use Toujeo only if the solution is clear and colorless with no particles visible.

While using Toujeo, do not drive or operate heavy machinery until you know how Toujeo affects you. Don't drink alcohol or use other medicines that contain alcohol.

**The most common side effect of Toujeo is low blood sugar (hypoglycemia), which may be serious and life-threatening.** Severe hypoglycemia may cause harm to your heart or brain. Symptoms of serious low blood sugar may include shaking, sweating, fast heartbeat, and blurred vision. The long-acting effect of Toujeo may delay recovery from low blood sugar compared to shorter-acting insulins.

Toujeo may cause severe allergic reactions that can lead to death. Get medical help right away if you have:

- A rash over your whole body
- Shortness of breath
- Swelling of your face, tongue, or throat
- Extreme drowsiness, dizziness, or confusion
- Trouble breathing
- Fast heartbeat
- Sweating

Toujeo may have additional side effects including swelling, weight gain, low potassium, and injection site reactions which may include change in fat tissue, skin thickening, redness, swelling, and itching.

Toujeo SoloStar and Toujeo Max SoloStar are single-patient-use prefilled insulin pens. It is important to perform a safety test when using a new pen for the first time. Talk to your doctor about proper injection technique and follow instructions in the *Instruction Leaflet* that comes with your Toujeo SoloStar or Toujeo Max SoloStar pen.

Please see full Important Safety Information for Toujeo throughout. Please [click here](https://products.sanofi.us/toujeo/toujeo.pdf) or visit <https://products.sanofi.us/toujeo/toujeo.pdf> for full Prescribing Information for Toujeo.

©2023 sanofi-aventis US LLC.

All rights reserved.

MAT-US-2303049-v1.0-04/2023